




**INDONUSA**  
M A R I N E

# M.V Tenggara Supporter

[www.indonusa-marine.net](http://www.indonusa-marine.net)

[www.indonusamarineservices.com](http://www.indonusamarineservices.com)

 @indonusamarine

# M.V. TENGGARA SUPPORTER



## GENERAL DATA

Built	: 2020
Builder	: PT. Asianfast Marine Industries
Flag	: Indonesia
Port of Registry	: Benoa
Call Sign	: YB 5678
MMSI	: 525 700 303
GT/NT	: 20 / 6
Length Over All	: 13.77 meters
Breadth	: 4.00 meters
Draught	: 1.15 meters
Aft Deck Area	: approx. 21.50 sqm (3.90m x 5.50m)

## NAVIGATION & COMMUNICATION

Radar	: 1x FURUNO ROP-142 model I715
Plotter/Sounder/GPS	: 1x Furuno GP-3700F
Magnetic Compass	: 1x
Radio Com	: 2 x VHF ICOM IC M506
FM Transceiver Radio	: ICOM IC-2300H
EPIRB	: 1x NSR Model NEB-2000C
AIS	: Class B ONWA/GP Plotter KP38
SART	: NSR RT191547 NRT 1000
Autopilot	: SIMRAD AP44
Comm Speaker	: Jotron Phontect 3100
Satellite Phone/Modem	: Rental, Subject to Available Unit

# M.V. TENGGARA SUPPORTER

## SAFETY

- 2 x 6 person Inflatable Life Raft
- 1 x 10 Person Inflatable Life Raft

## MACHINERY

Main Engine	: 2 x 404 HP Cummins QSL9
Propulsion	: 2 x fixed pitch propellers
Generator	: MASE 15kva 3 phase



## PERFORMANCE & CAPACITY

Max Speed	: 20 knots
Max Operation Speed	: 18 knots
Fuel Consumption	: 700 RPM/idle - 4 knots - 13L/Hr 1,850 RPM/17 knots - 110L/Hr
Fuel Capacity	: 3,000 liters
Fresh Water Capacity	: 500 liters



# M.V. TENGGARA SUPPORTER

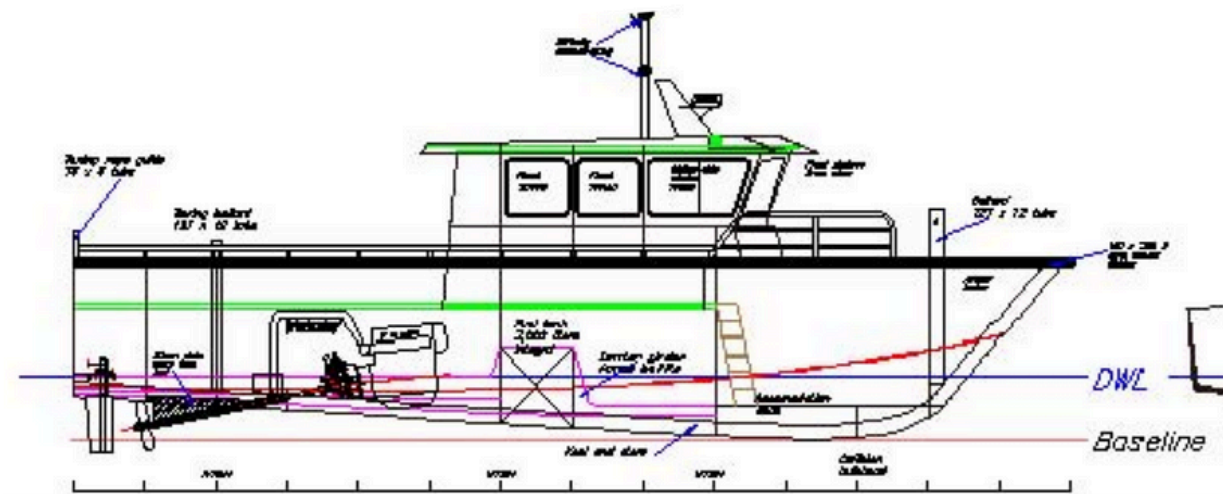
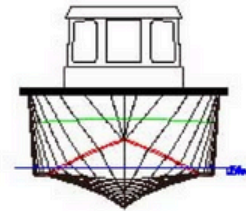
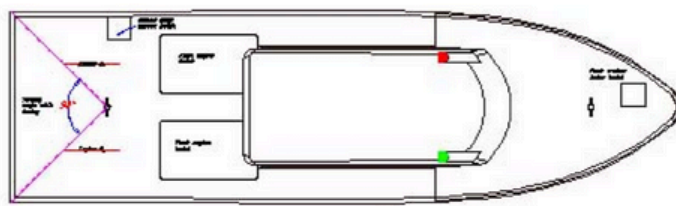
## LIFTING EQUIPMENT

- A frame safe weight load 250kgs
- Swing boom/davits on boat sides safe weight load 80kgs
- Aft hydraulic winch with 300 meters 8 mm cable





# M.V. TENGGARA SUPPORTER



# MARINE AGENCY SERVICES

## VESSEL EXPERIENCE

### M.V TENGGARA SUPPORTER

Launched in January 2020 at Batam and chartered by PT.Sumbawa Timur Mining for Environmental survey, metocean survey, mega fauna survey at Cempi Bay, Dompu region, West Nusa Tenggara.

2023 - 2024 :

Inshore survey, Bathymetry, Personnel Transfer, Ship to Ship Personnel Transfer

2020 - 2022 :

Support vessel to Environment Surveys, ADCP deployment & recovery, AUV deployment & recovery at Cempi Bay, Dompu region, West Nusa Tenggara